

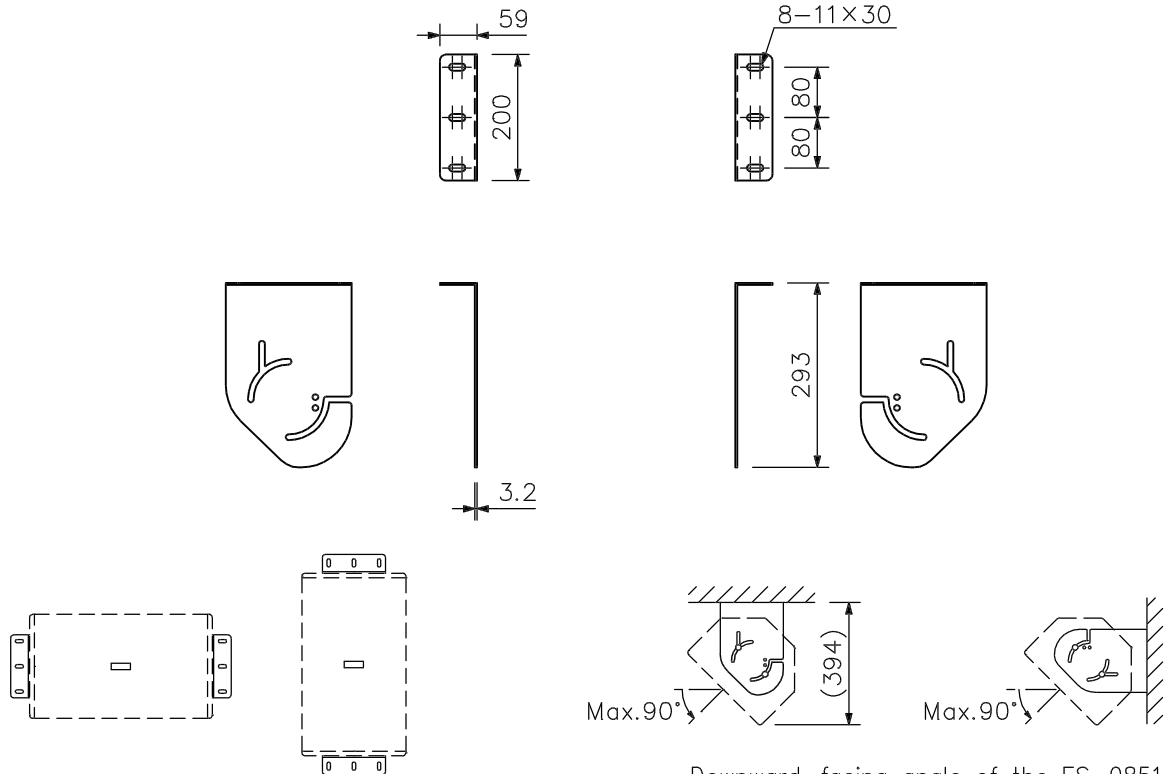
DESCRIPTION

The HY-0851CL is a speaker mounting bracket specially designed for mounting TOA's ES-0851 speaker on a wall or ceiling.

SPECIFICATIONS

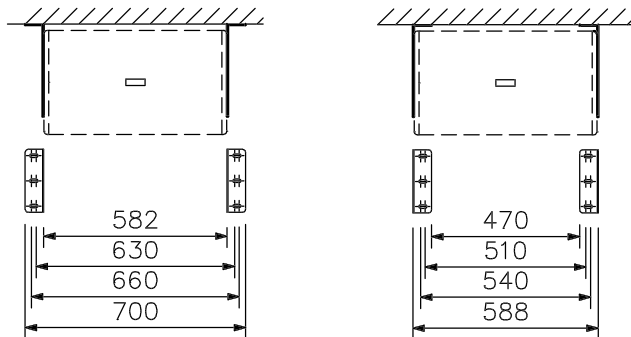
Usable Speaker	ES-0851
Finish	Rolled steel plate, black, semi-mat paint
Permissible Speaker Load	28 kg
Weight	2.9 kg
Accessory	Speaker mounting bolt 4

APPEARANCE



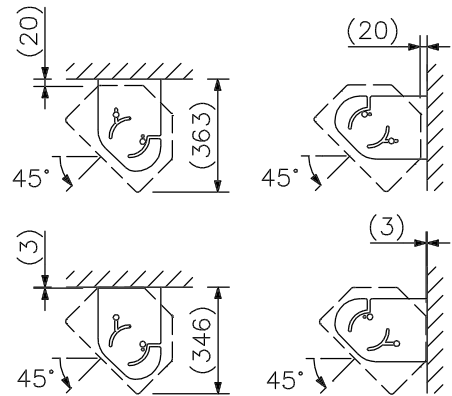
ES-0851 speaker can be mounted to a wall horizontally or vertically.

Downward-facing angle of the ES-0851 speaker mounted to a ceiling or wall



Dimension when the ES-0851 speaker is mounted so that the bracket faces outward.

Dimension when the ES-0851 speaker is mounted so that the bracket faces inward.



Downward-facing angle of the ES-0851 speaker mounted closely to a ceiling or wall

UNIT:mm SCALE:1/12