

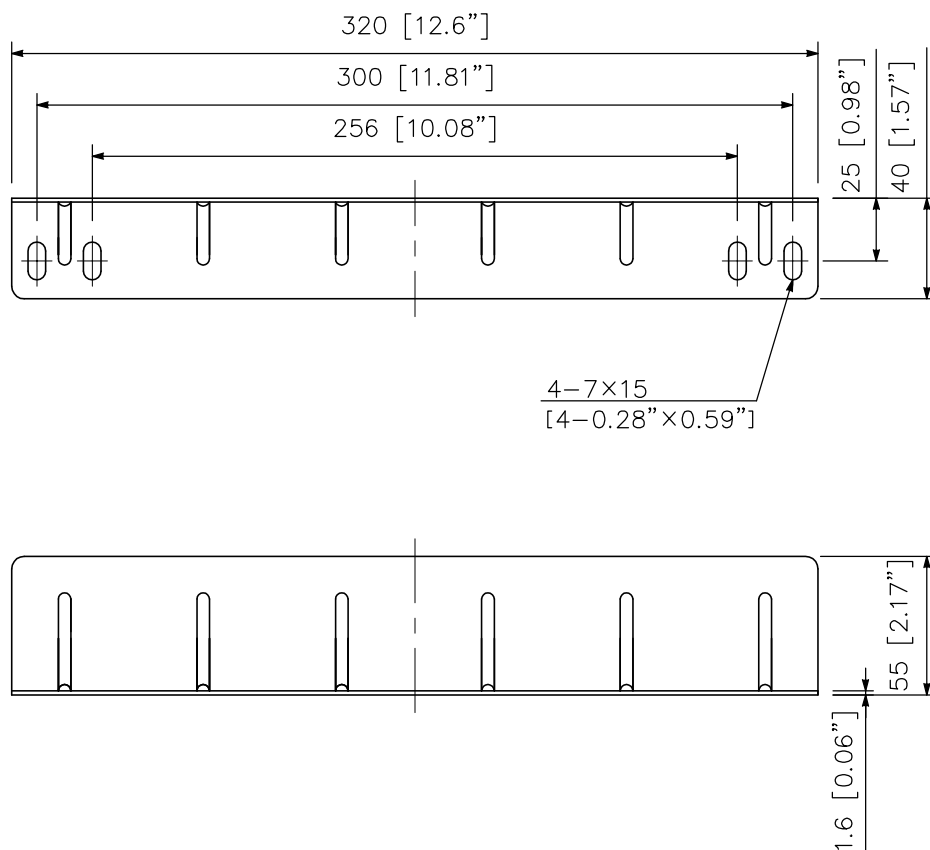
■ DESCRIPTION

Used to support heavy rack equipment, the YA-706 is supplied in pairs.

■ SPECIFICATIONS

| | |
|------------------|------------------------------|
| Finish | Surface-treated steel plate |
| Weight | 720 g (1.59 lb.) (2 pieces) |
| Applicable Racks | CR-273, CR-413, and CR-413-6 |
| Accessory | Rack mounting screw *1 set |

■ APPEARANCE



UNIT:mm SCALE:1/3