



MA-725F MM-700F

Matrix Mixer and Amplifier with DSP

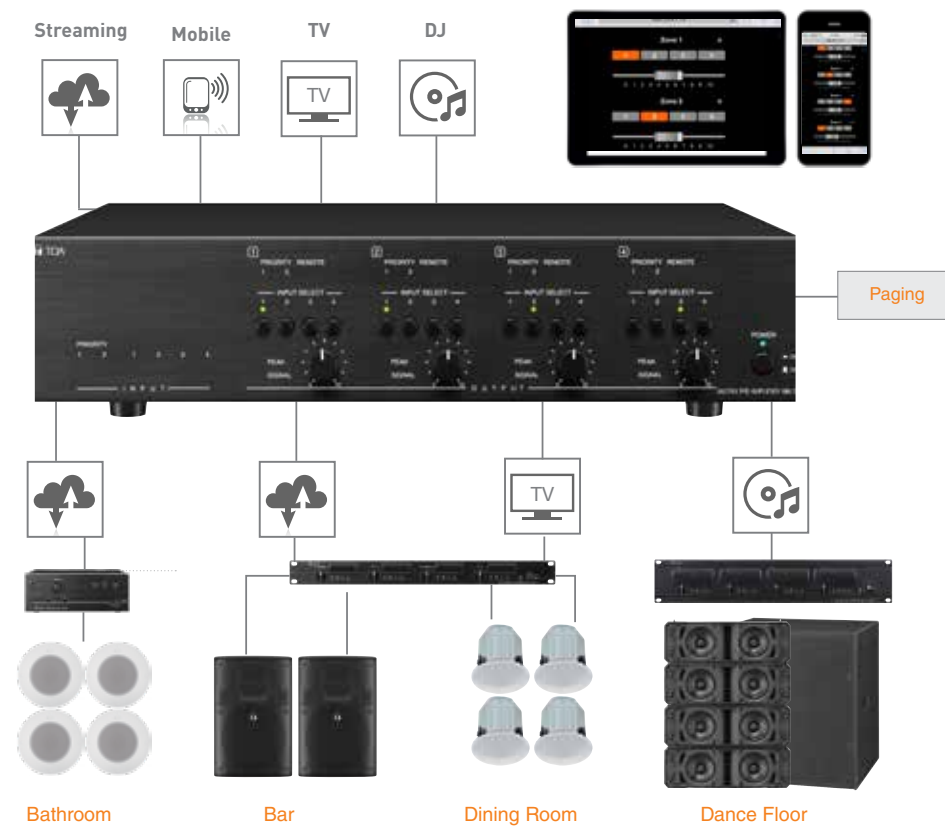


Rapid installation and intuitive operation with the most robust quality in the industry.

MM-700F 6x4 Matrix Mixer with DSP

The MM-700F is a 6-input and 4-zone output matrix pre-amplifier with easy analog control of mixing functions and digital processing. While browser remote control is available for computers and smart devices, no PC is required to set up and operate this versatile unit. Matrix and DSP settings, can be made simply, without the need for a computer. Time spent on installation and system tuning is greatly reduced. The paging function has two-levels of priority: (1) manual activation or (2) automatic (vox) activation. Enhanced functionality is tailored to both background music and paging applications. The MM-700F is ideally suited for establishments where different kinds of background music are required for different zones or where staff paging announcements are selectively directed to one area such as a restaurant or sales area. The optional WP-700 provides volume control and source selection for up to four zones. Wireless browser-based remote control is available via any computer or smart device at no additional cost.

MM-700F SYSTEM EXAMPLE



KEY FEATURES

- 4 stereo line and 2 priority MIC/LINE inputs with matrix routing to 4 line outputs
- 2 priority inputs with different priority level for paging or other audio source to override stereo line inputs
- Each priority input has input gain level, mute sensitivity and mute hold time adjustments
- 4 BGM/Audio source selection on each output
- Independent DSP preset selection per each channel and 50Hz HPF for speaker protections
- DSP preset selections include general EQs, TOA speaker EQs and X-over settings to be used with subwoofers
- WP-700 zone source/volume control available
- Up to 4 wall mount remote control, WP-700 can be connected to control the line input selection and output volume
- Browser-based Smart Control
- 100-240V universal power supply



MA-725F 6x4 Matrix Mixer Amplifier

TOA's MA-725F matrix amplifier is an all-in-one solution for multi-zone applications combining a 6x4 audio matrix, DSP, and four channels of Class-D amplification in one chassis (250Wx4 @70V/100V). It is equipped with four independent line inputs, and 2 MIC/LINE priority inputs. Each output has independent DSP preset adjustments and individual source selection. The system is controlled via front panel, WP-700 remote source and volume controller, browser with computer or smart device, or any combination thereof. The MA-725F is the perfect choice for quick and easy installations requiring quality sound, intuitive operation, and flexible source to zone control.

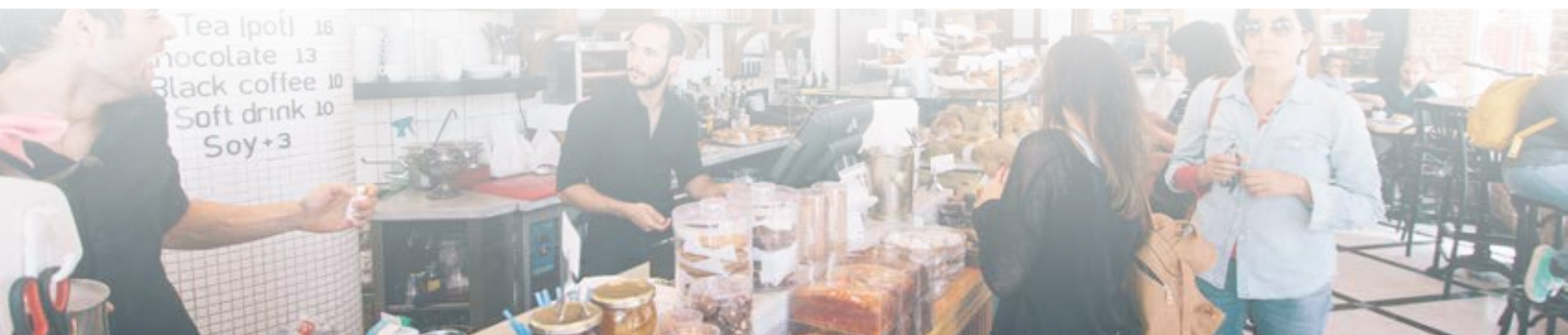


MA-725F SYSTEM EXAMPLE



KEY FEATURES

- 4 stereo line and 2 priority MIC/LINE inputs with matrix routing to 4 amplifier outputs
- 2 priority inputs with different priority level for paging or other audio source to override stereo line inputs
- Each priority input has input gain level, mute sensitivity and mute hold time adjustments
- 4 channels of 250W Class-D amplifier at 70V/100V
- Independent DSP preset selection per each channel and 50Hz HPF for speaker protections
- DSP preset selections include general EQs, TOA speaker EQs and X-over settings to be used with subwoofers
- Each output channel also has auxiliary line output to deliver audio to other audio systems for scale expansions
- Up to 4 wall mount remote control, WP-700 can be connected to control the line input selection and output volume
- Browser-based Smart Control
- 100-240V universal power supply



SPECIFICATIONS

		MA-725F	MM-700F
Power Source		100 – 240V AC, 50/60 Hz	
Power Consumption		1350W (rated output)	9 W (idle), 1W or less (standby)
Frequency Response		20Hz – 20kHz (-3dB / +1 dB, LPF OFF)	20Hz - 20 kHz (-3 dB / + 1 dB)
Total Harmonic Distortion		1% or less, at 1 kHz, rated output	0.5% or less, at 1 kHz, rated output
Input	Priority 1-2:	Mic -60dB/Line -10dBV selectable, 2.2k Ω , electronically-balanced, removable terminal block	
	Line In 1-4:	-10dBV, 10k Ω , unbalanced, 2 RCA jacks (Stereo summing)	
Output	Speaker 1-4:	70V (20 Ω), 100V (40 Ω), removable terminal block	--
	Line Out 1-4:	0dBV, 600 Ω , unbalanced, RCA jack	0 dB*, 600 Ω , unbalanced, removable terminal block
	MOH:	0 dBV, 600 Ω , transformer balanced, removable terminal block	
DSP Preset		16 presets in 4 banks at each output channel, selectable	
S/N Ratio		Mic: 60dBV or more, Line: 75dBV or more (A-weighted)	
Muting		Manual mute / Automatic mute	
Mute Hold Time		50ms - 10 seconds, adjustable	
Priority Level		PRIORITY 1 > PRIORITY 2 > LINE 1-4	
Control	Power:	ON/OFF switch, Power remote terminal	
	Priority 1-2:	MIC/LINE selector switch, Gain control, Assign switch, Auto mute switch, Mute sense control, Manual mute terminal, Mute hold time control, Priority mix switch	
	Line In 1-4:	Gain control, Assign restriction switch	
	Output 1-4:	LINE IN 1-4 selector switch, Output gain control, 70V/100V selector switch, HPF switch, DSP bank selector switch, DSP preset selector switch	LINE IN 1-4 selector switch, Output gain control, DSP bank selector switch, DSP preset selector switch
	Remote 1-4:	Remote control connector (RJ-45), Remote link switch	
Operating Temperature		0 to 40 °C degree (32 to 104 °F)	
Operating Humidity		35% to 80%RH (no condensation)	
Finish		Panel: Aluminum, hair line, black; Case: Steel plate, black, paint	
Dimensions (W x H x D)		420 x 107.6 x 350mm	
Weight		7.6kg	5.7 kg
Accessories		Power cord (2m) x1, Removable terminal plug (5 pins x 2, 3 pins x 1, 2 pins x 4); Rack mounting bracket x 2, Bracket mounting screws x 4, User manual x 1	
Option		Remote Control Panel : WP-700	

OPTION



WP-700 Remote Control Panel

- Remote control switch/volume panel designed to be used with the MA-725F matrix amplifier
- Provides remote input source selection and volume control over Ethernet
- Decora-style plate mountable in a 1-gang electrical box



Smiles for the Public

TOA Electronics Pte Ltd
www.toa.com.sg

Specifications are subject to change without notice.
Printed in Singapore (65) 865-0719-02B



Like us on Facebook
facebook.com/TOAasiapacific