

● DESCRIPTION

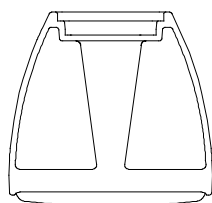
The speaker is column speaker system small type designed for high efficiency, wide range especially high frequency result and high power input handling capability. Combined used of the supplied bracket the speaker to be mounted in many different application.

● SPECIFICATION

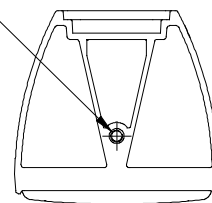
| | |
|--------------------|---|
| Enclosure | Sealed type |
| Rated Input | 20 W |
| Rated Impedance | 100V line: 500Ω (20W), 1kΩ (10W), 2kΩ (5W), 4kΩ (2.5W) |
| | 70V line : 500Ω (10W), 1kΩ (5W), 2kΩ (2.5W), 4kΩ (1.3W) |
| Sensitivity | 90 dB (1W, 1m) |
| Frequency Response | 150 - 16,000Hz |
| Speaker Component | 10cm(4") Cone-type x 2 |
| Input Terminal | Push-in terminal |
| Finish | Enclosure: HIPS, black, paint Punched Net: Surface-tread steel plate, black, paint Speaker bracket: Aluminum die-cast, black, paint Joint bracket, wall bracket: Steel plate, t1.6, black, paint |
| Dimensions | 135 (W) X 250 (H) X 128 (D) mm (5.31" X 9.84" X 5.04") |
| Weight | 1.9 kg (4.18 lb) unit only |
| Accessory | Speaker bracket: 1, Joint bracket 1, Wall bracket 1, Fixing bolt M5 x 60 1, Hexagon bolt M6 x 12 (with plain washer and spring washer) 2, Machine screw M5 x 20 (with plain washer and spring washer) 2, Hexagon bolt M8 x 15 1 |
| Optional | Speaker stand: ST-16A |

Note: Bolt and nuts for mounting the bracket to the wall are not included.

● APPEARANCE



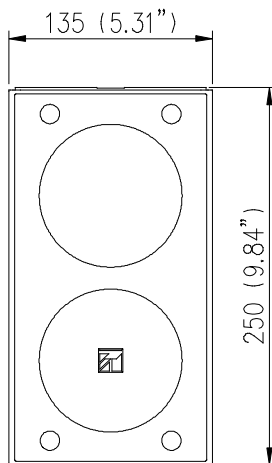
Top View



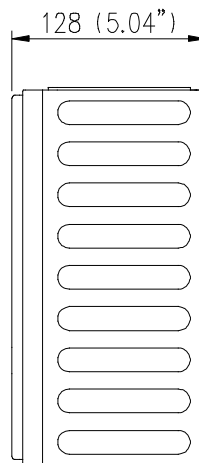
Bottom View

M8 (depth 13(0.51")
(for stand mounting)

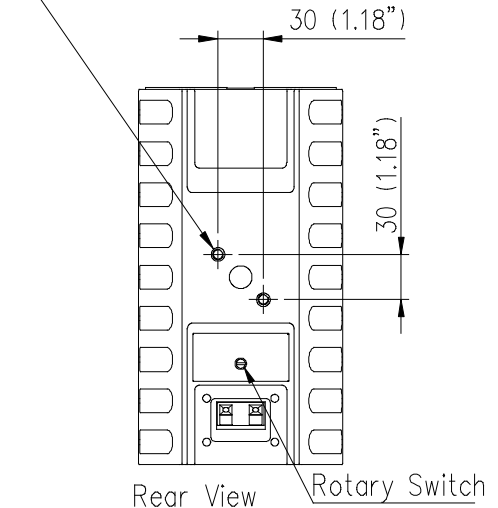
2-M5 (depth 10(0.39")
(for bracket mounting)



Front View



Side View



Rear View

Rotary Switch

UNIT: mm SCALE: 1/5