

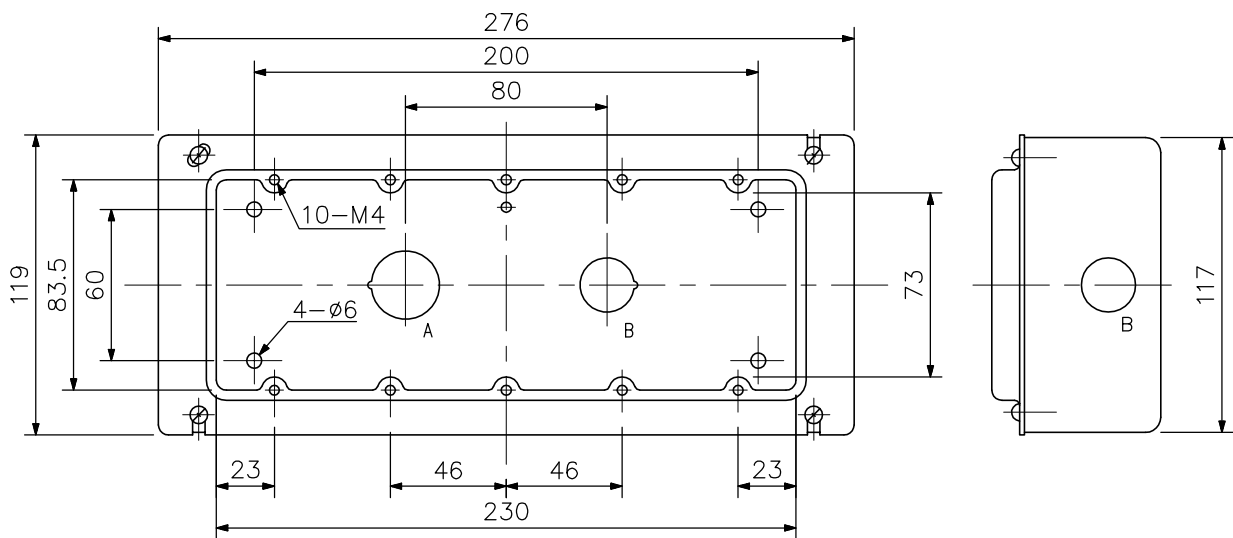
### DESCRIPTION

The YC-241 back box is used with the YC-240M/YC-240S or N-8031MS flush-mounting kit.

### SPECIFICATIONS

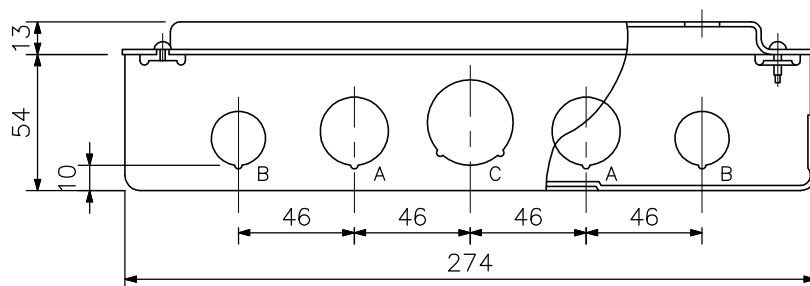
Finish	Colored chrome plating
Dimensions	276 (W) × 119 (H) × 67 (D) mm
Weight	1.1 kg

### APPEARANCE



Front View

Side View



Bottom View

Dimension of knockout hole  
 A: 27.1  
 B: 21.5  
 C: 34

UNIT: mm SCALE: 1/3